

POL'ARENA

Construction d'une patinoire

AMENAGEMENTS EXTERIEURS

ECHELLE : 1:500 DATE : 26.09.2022 - ms/sr MODIF :

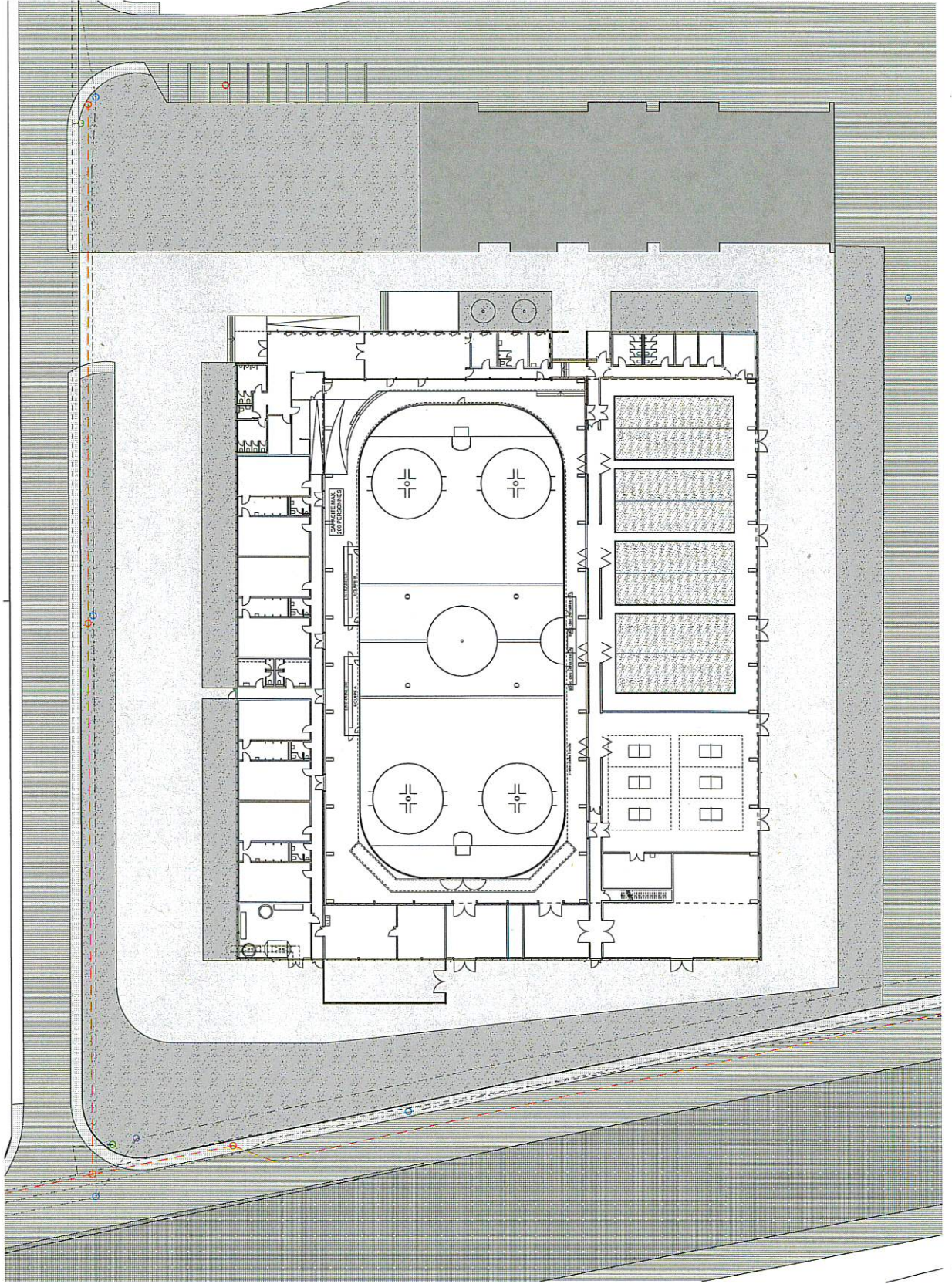
coretra sa | route de st-cergue 311 | 1260 nyon | suisse

agence | coretra | e c t u r e

ENQ 01

NIVEAU 0 = 413.40 PARCELLE N° 91

FORNAT : A3
PROVISOIRE
+41 26 51 30 69 | f +41 22 369 30 82 | info@coretra.ch | www.coretra.ch



POL'ARENA

Construction d'une patinoire
REZ-DE-CHAUSSEE
ECHELLE : 1:400 DATE :26.09.2022 - mslr MODIF :
coretra sa | route de st-cergue 311 | 1260 nyon | suisse

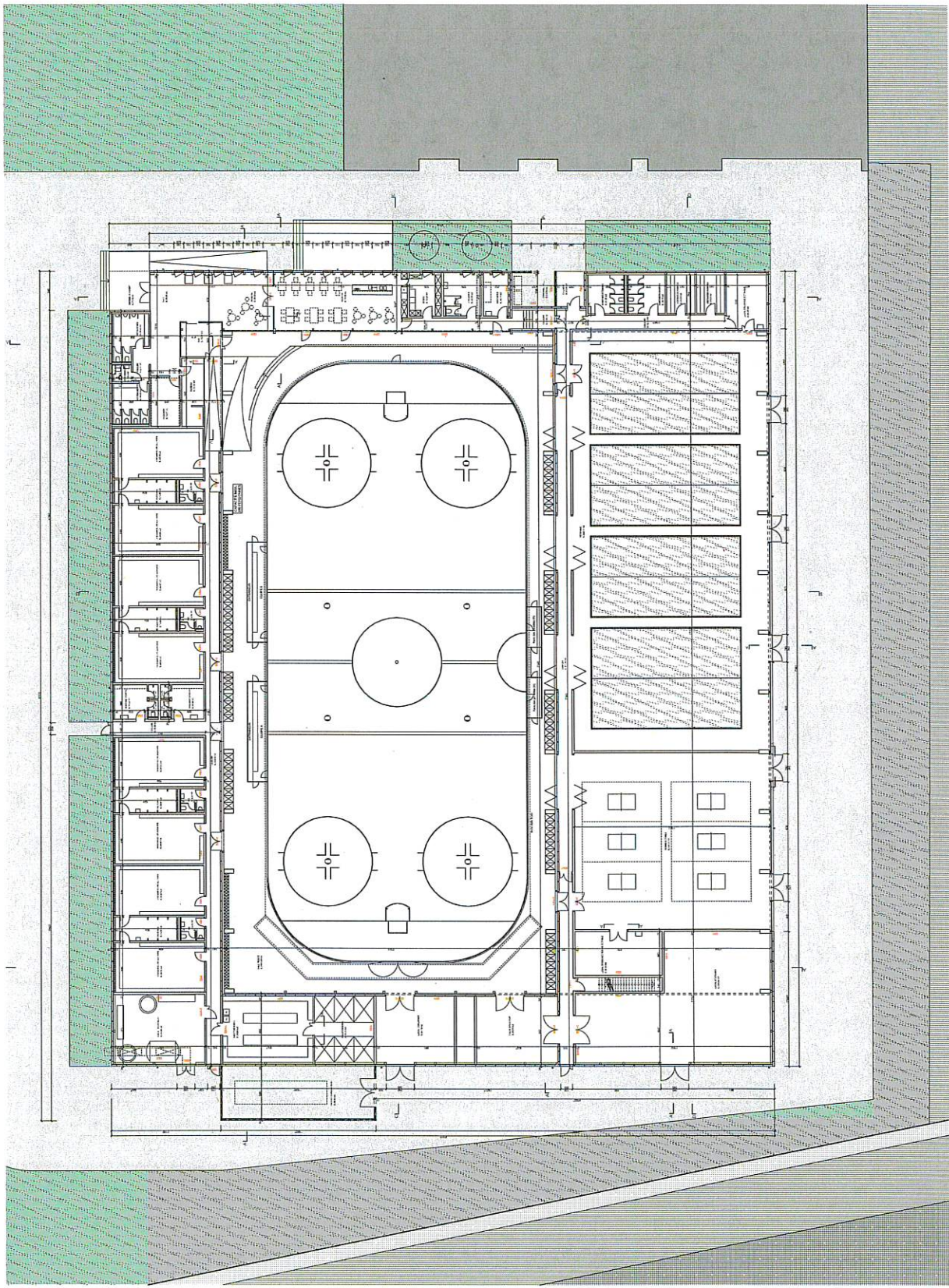
architecte | coretra | ecture

ENQ 02

PARCELLE N° 91

NIVEAU 0 = 413.40

FORMA AB
PROVISOIRE
+41 22 369 30 82 | info@coretra.ch | www.coretra.ch



POL'ARENA

Construction d'une patinoire

ETAGE

coretra sa | DATE : 08.10.2021 - mslr | MODIF :

coretra sa | route de st-cergue 311 | 1260 nyon | suisse

FORNIT. PAR
+41 22 651 39 69
PROMISORE

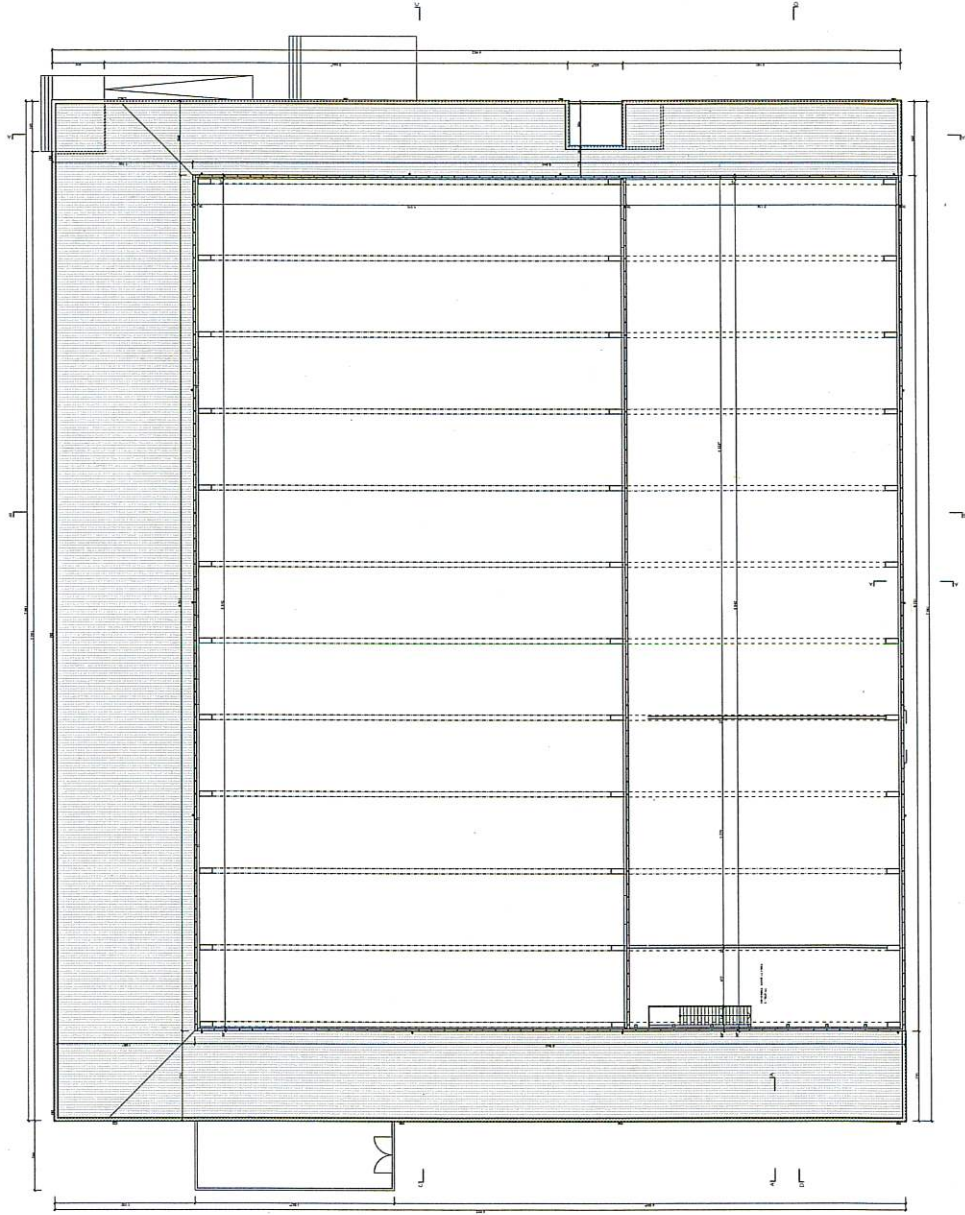
NIVEAU 0 = 413.40

PARCELLE N° 91

ENQ 03

archit coretra|ecture

info@coretra.ch | www.coretra.ch



POL'ARENA

Construction d'une patinoire

TOITURE

ECHELLE : 1:400

DATE 08.10.2021 - ms/sr

MODIF :

coretra sa | route de st-cergue 311 | 1260 nyon | suisse

41 21 65 39 69

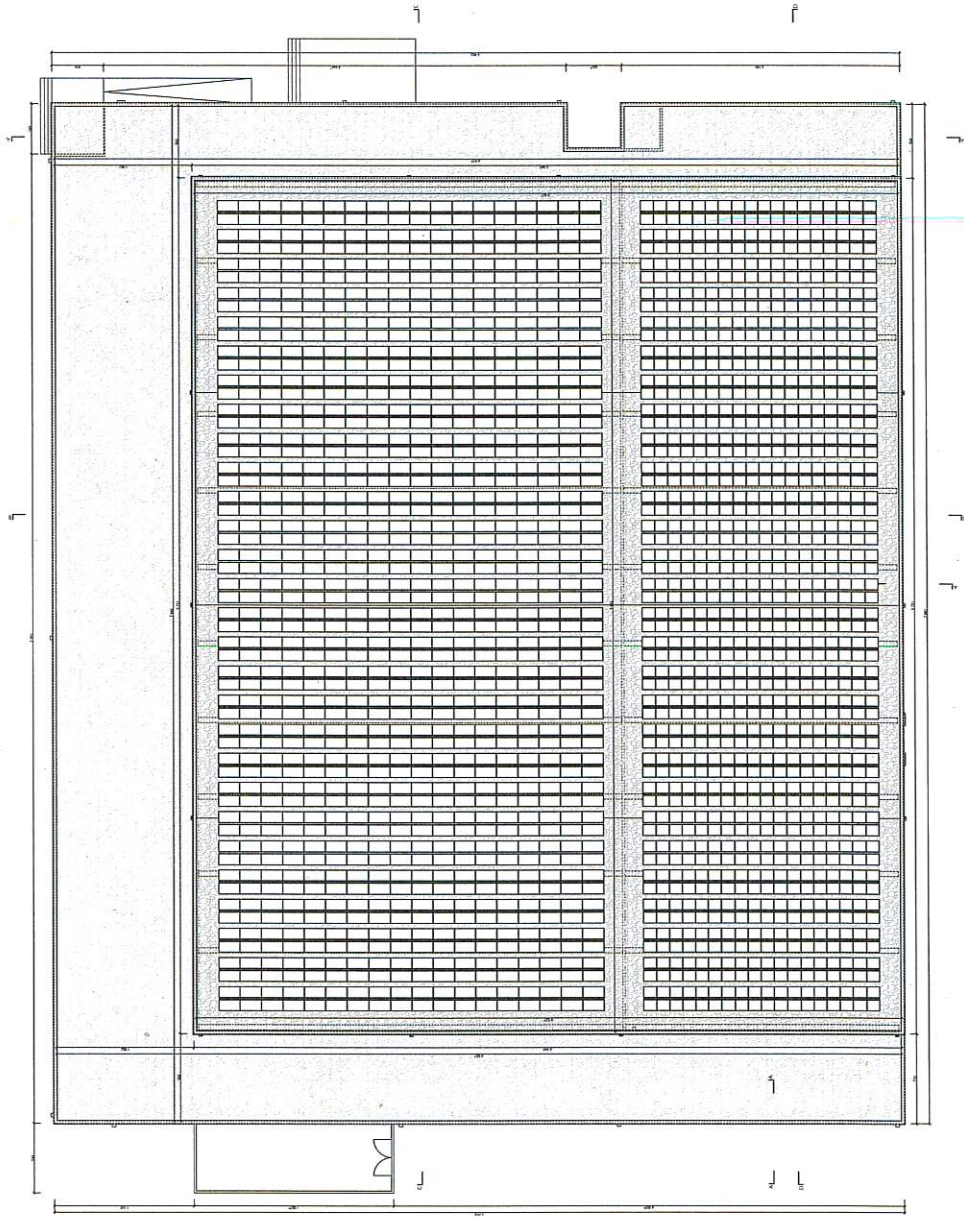
PROVISOIRE

NIVEAU 0 = 413.40

PARCELLE N° 91

archit | **coretra** | ecture

ENQ 04



POL'ARENA

Construction d'une patinoire

COUPES AA, BB, CC ET DD

ECHELLE : 1/400

DATE : 08.10.2021 - ms/sr

coretra sa | route de st-cergue 311 | 1260 nyon | suisse

architecte **coretra** | e c t u r e

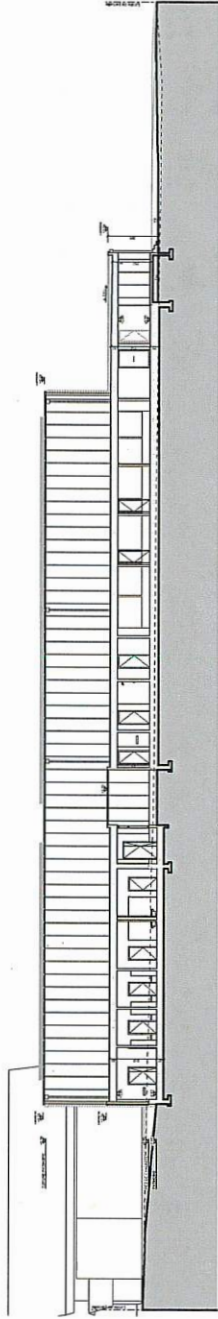
ENQ 05

PARCELLE N° 91

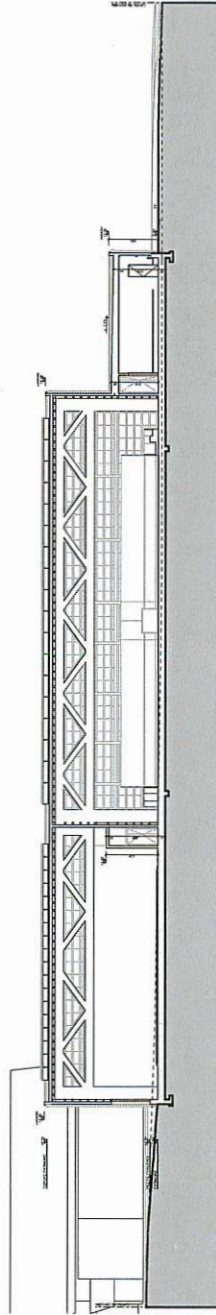
NIVEAU 0 = 413.40

info@coretra.ch | www.coretra.ch

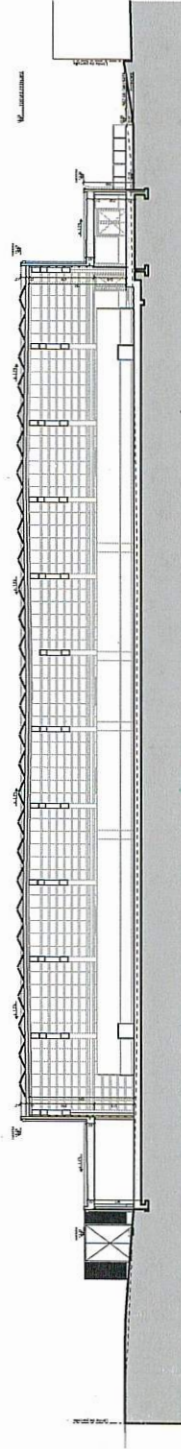
FORMA 14.11.21 16:59:05
PROVISOIRE



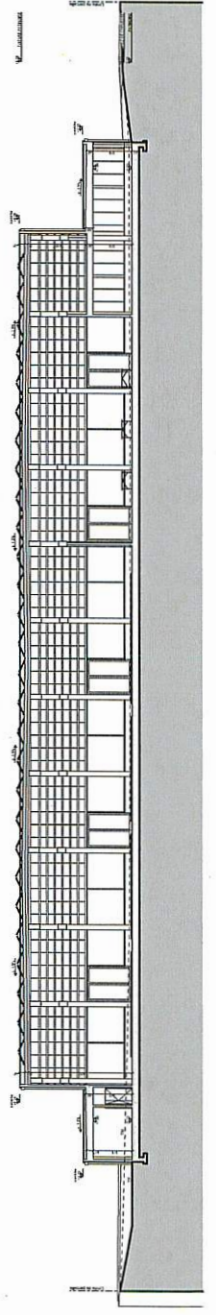
COUPE AA



COUPE BB



COUPE CC



COUPE DD



POL'ARENA

Construction d'une patinoire

FACADES NORD, SUD, EST ET OUEST

ECHELLE : 1:400 DATE 08.10.2021 - ms/kr MODIF :

coretra sa | route de st-cergue 311 | 1260 nyon | sus@coretra.ch | +41 22 65 30 82

agence | coretra | ecture

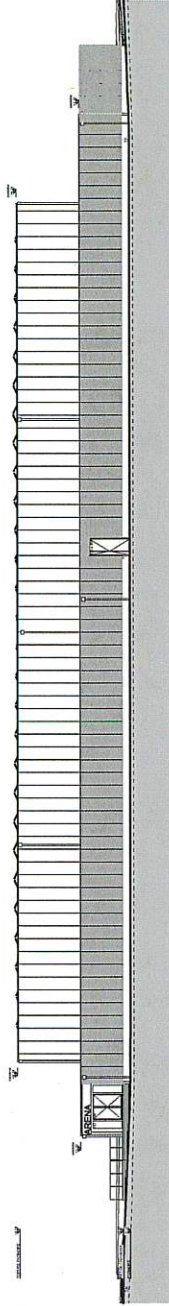
ENQ 06

PARCELLE N° 91

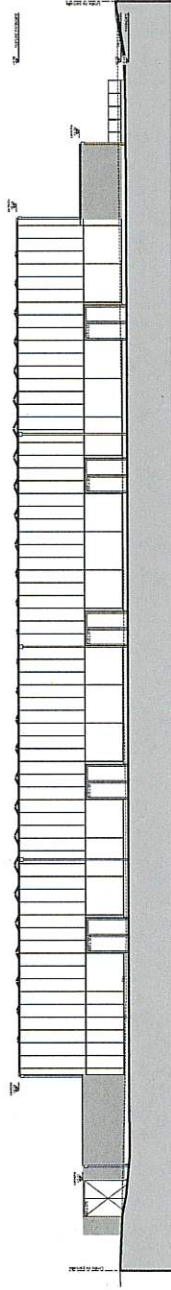
NIVEAU 0 = 413.40

info@coretra.ch | www.coretra.ch

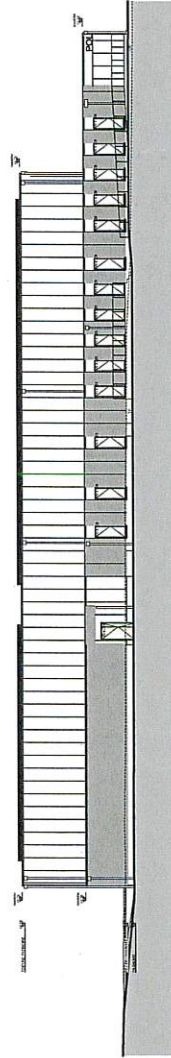
PROVISOIRE



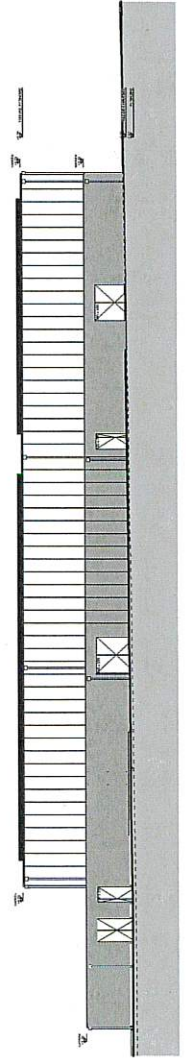
FACADE NORD



FACADE SUD



FACADE EST



FACADE OUEST



POL'ARENA

Construction d'une patinoire

REPARTITION DES SURFACES ENTRE POL'ARENA SA ET COMMUNE DE GLAND

ECHELLE : 1/500 DATE : 01.09.2021 - sr MODIF : 09.09.2021 - sr FORMAT : A3 NIVEAU 0 = 413.40 PARCELLE N° 91
coretra sa | route de st-cergue 311 | 1260 nyon | suisse | t +41 22 369 30 69 | f +41 22 369 30 82 | info@coretra.ch | www.coretra.ch

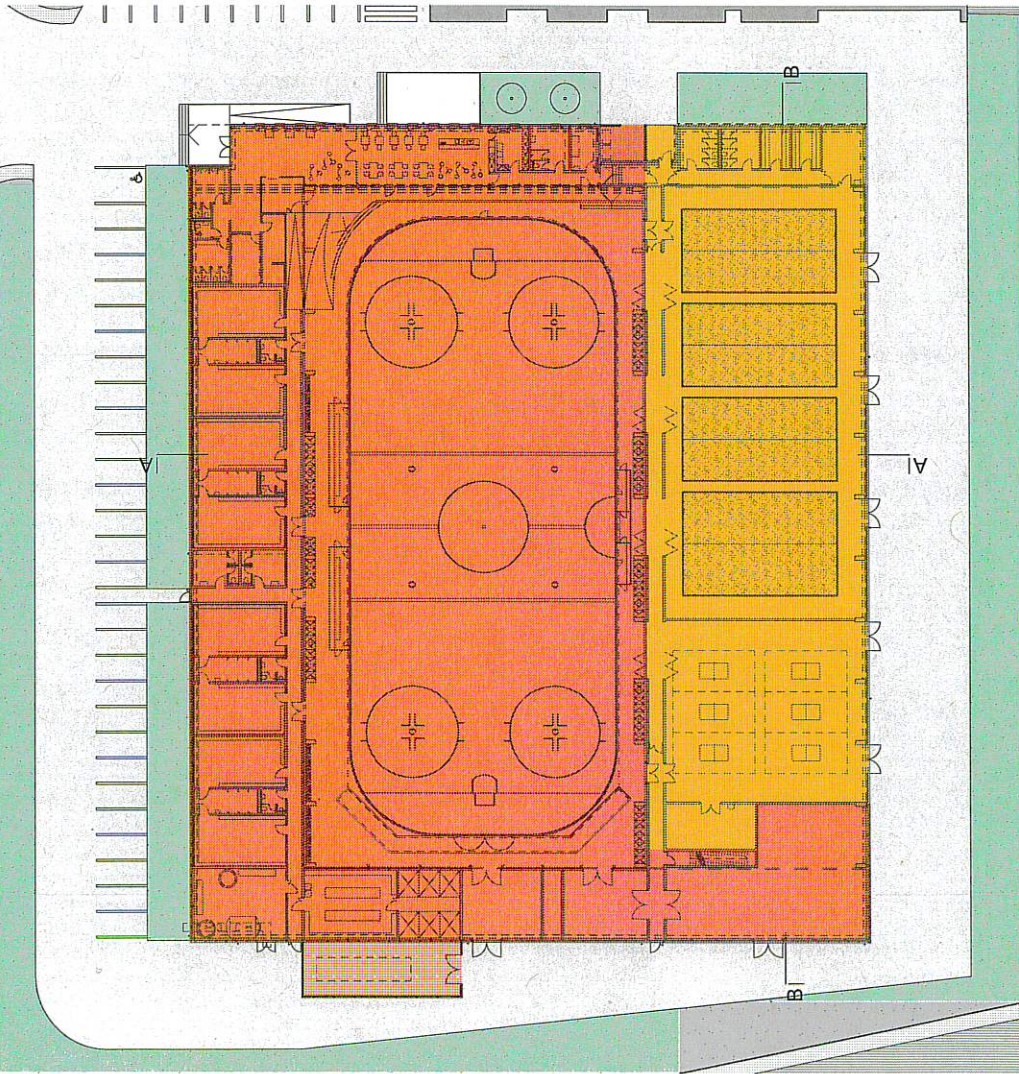
architecte **coretra**ecture



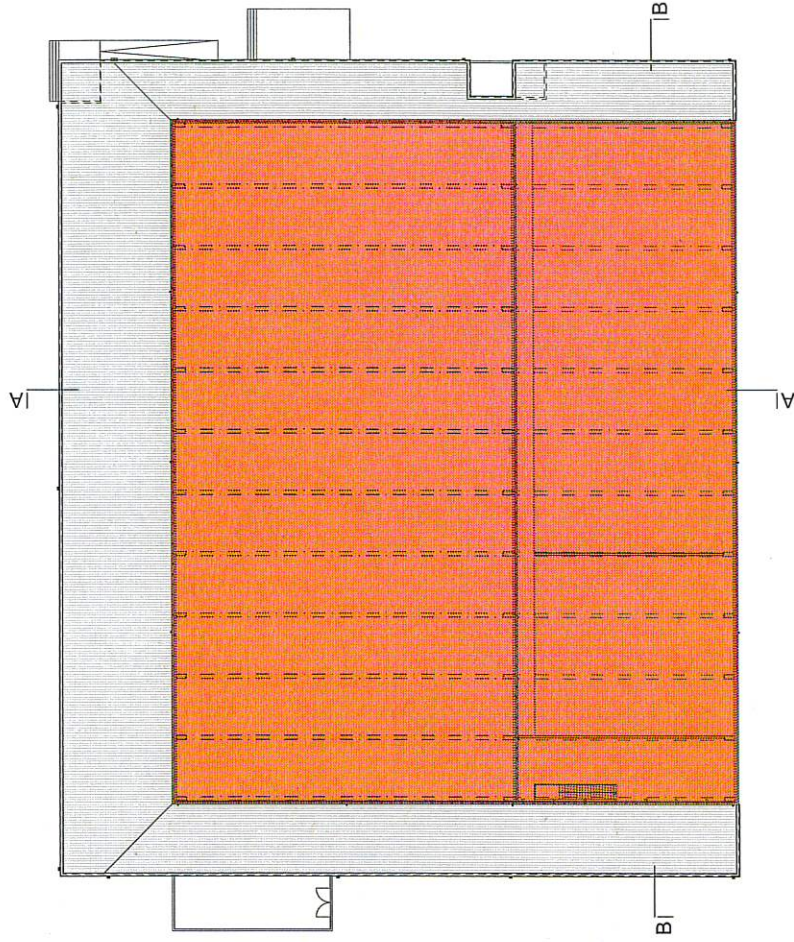
POL'ARENA



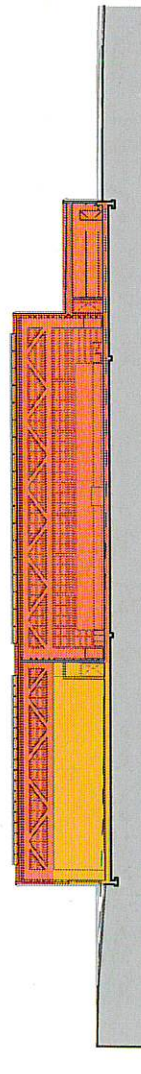
PETANQUE / TENNIS DE TABLE



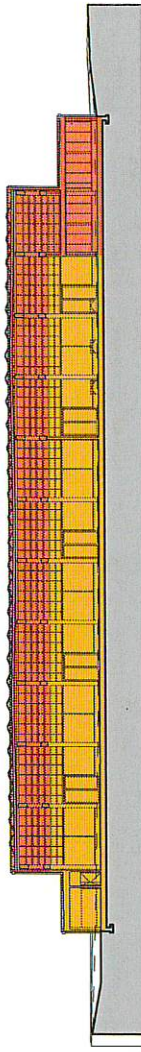
REZ-DE-CHAUSSEE
1/500



ETAGE
1/500



COUPE AA
1/500



COUPE BB
1/500

POL'ARENA

Construction d'une patinoire
REPARTITION DES SURFACES ENTRE POL'ARENA SA ET
COMMUNE DE GLAND

coretra sa | route de st-cergue 311 | 1260 nyon | suisse | t +41 22 369 30 69 | f +41 22 369 30 82 | info@coretra.ch | www.coretra.ch

DATE : 01.09.2021 - sr

MODIF : 09.09.2021 - sr

FORMAT : A3

NIVEAU 0 = 413.40

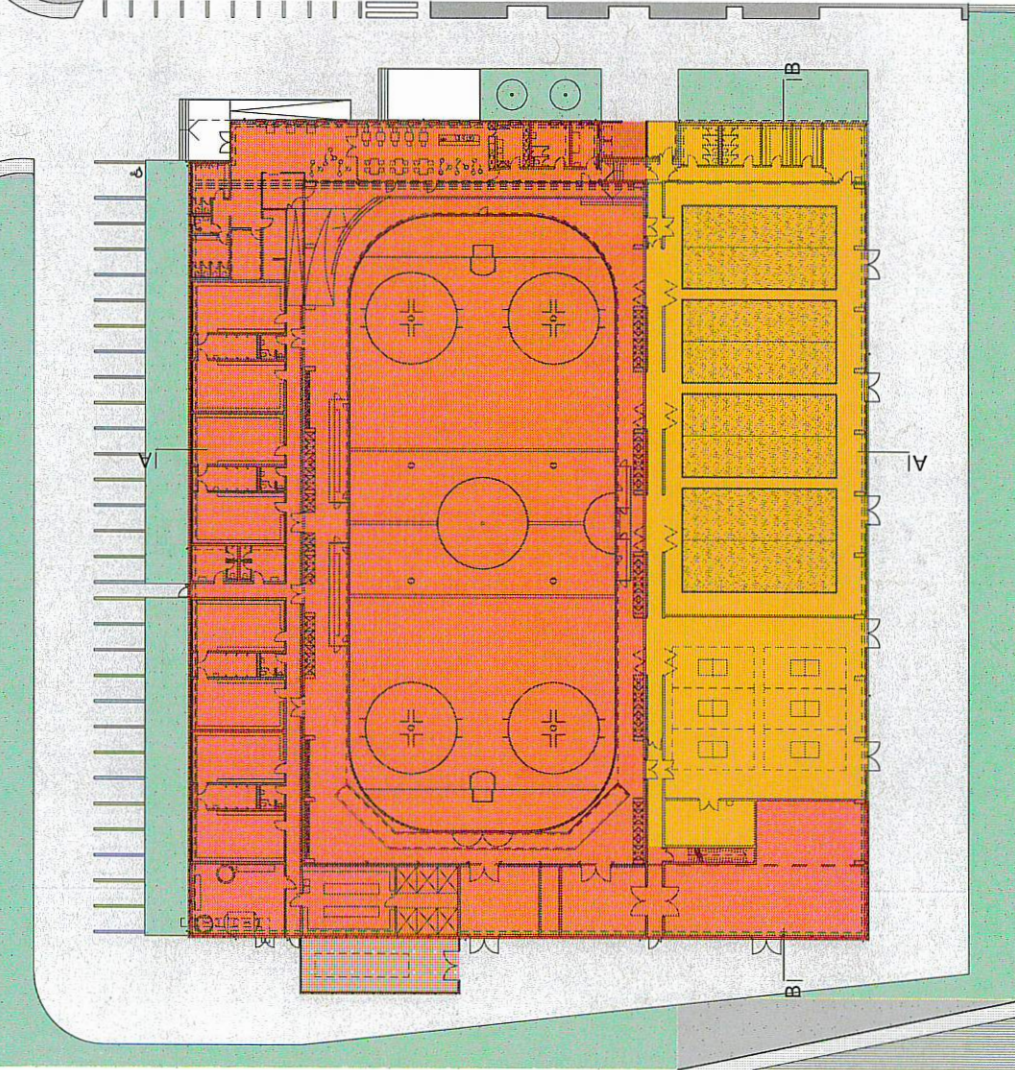
PARCELLE N° 91

architecte **coretra** ecture



POL'ARENA

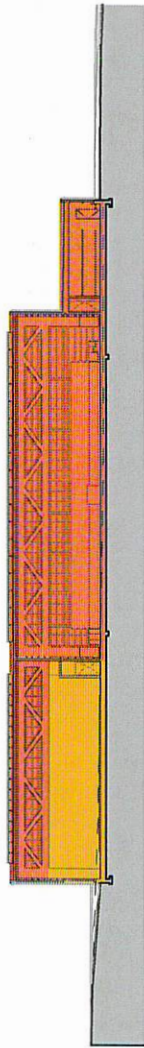
PETANQUE / TENNIS DE TABLE



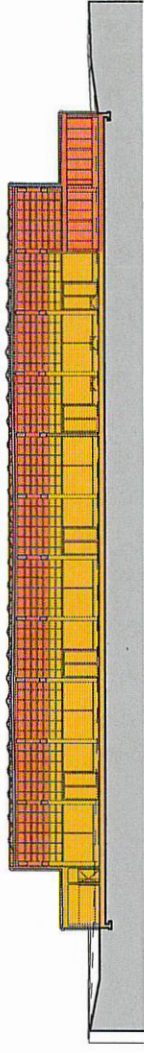
REZ-DE-CHAUSSEE
1/500



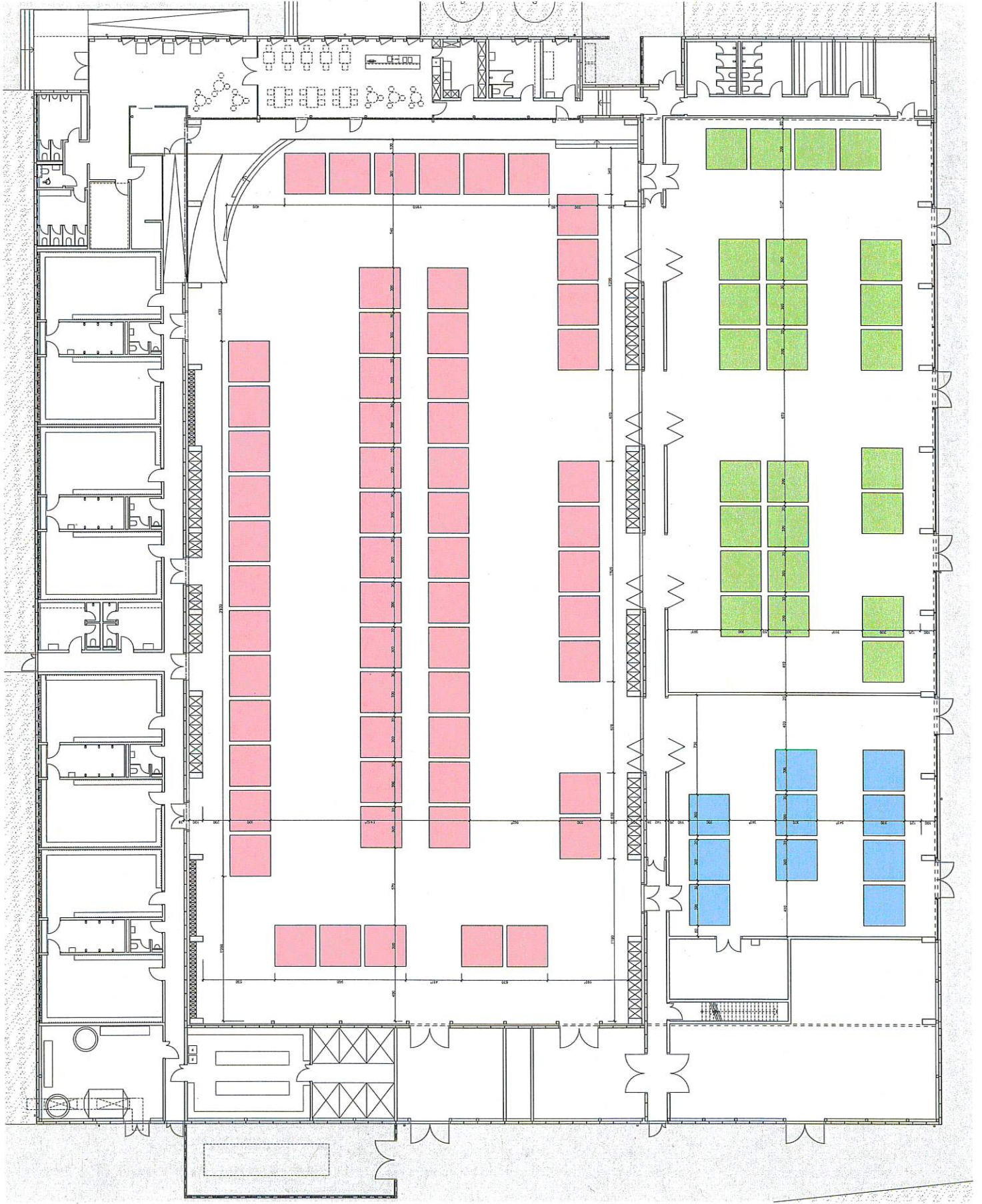
ETAGE
1/500






COUPE AA
1/500



COUPE BB
1/500



-  60 STANDS (3x3m)
 -  10 STANDS (3x3m)
 -  25 STANDS (3x3m)
- TOTAL = 95 STANDS





POL'ARENA

Construction d'une patinoire

IMAGE

ECHELLE : 1:1

DATE 26.09.2023 - ms/kr

MODIF :

coretra sa | route de st-cergue 311 | 1260 nyon | suisse

tel +41 22 665 30 89

fax +41 22 665 30 89

info@coretra.ch

www.coretra.ch

architecte **coretra** eccluse

PERSPECTIVE 01

NIVEAU 0 = 413.40

PARCELLE N° 91

info@coretra.ch | www.coretra.ch

